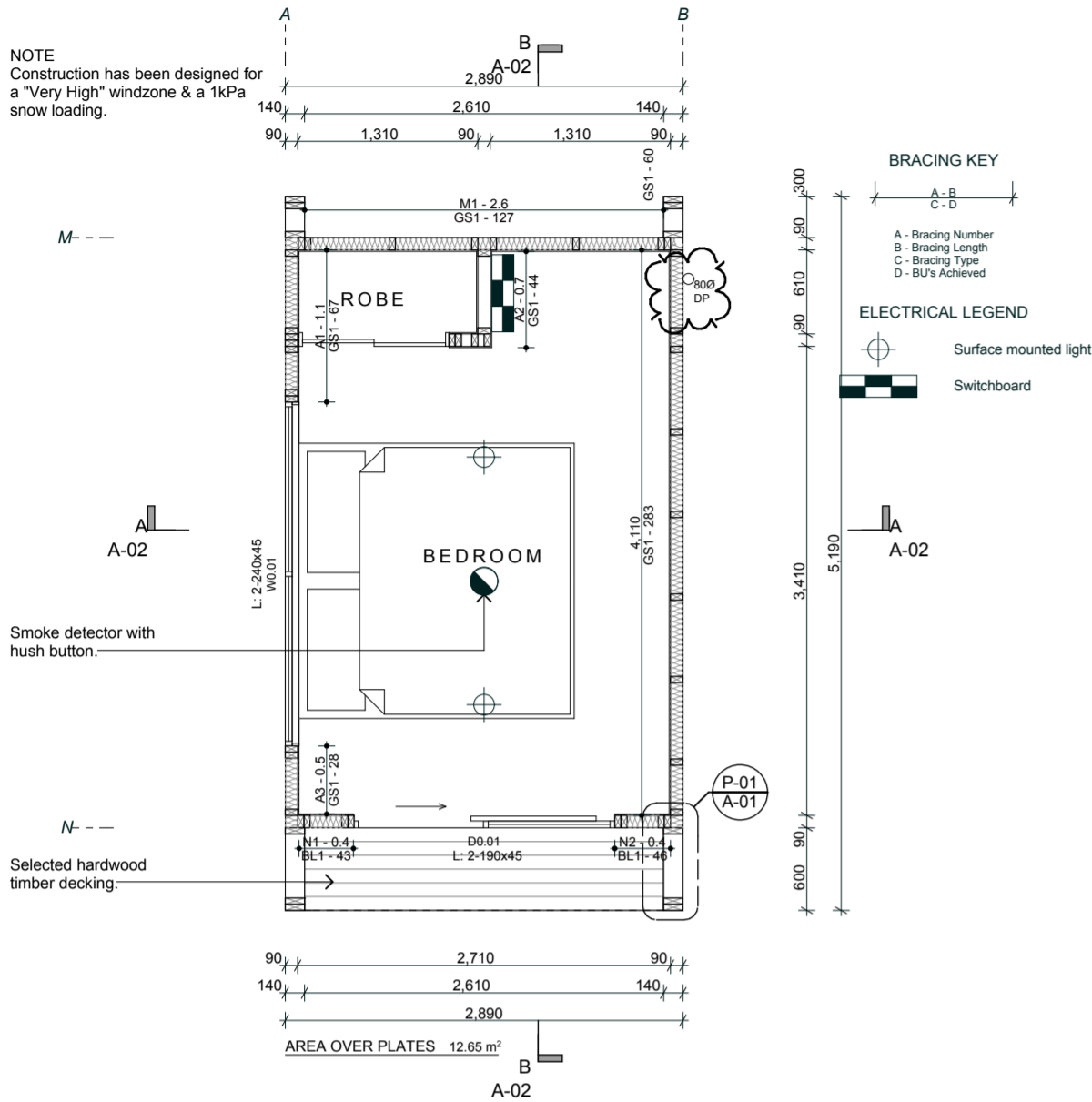


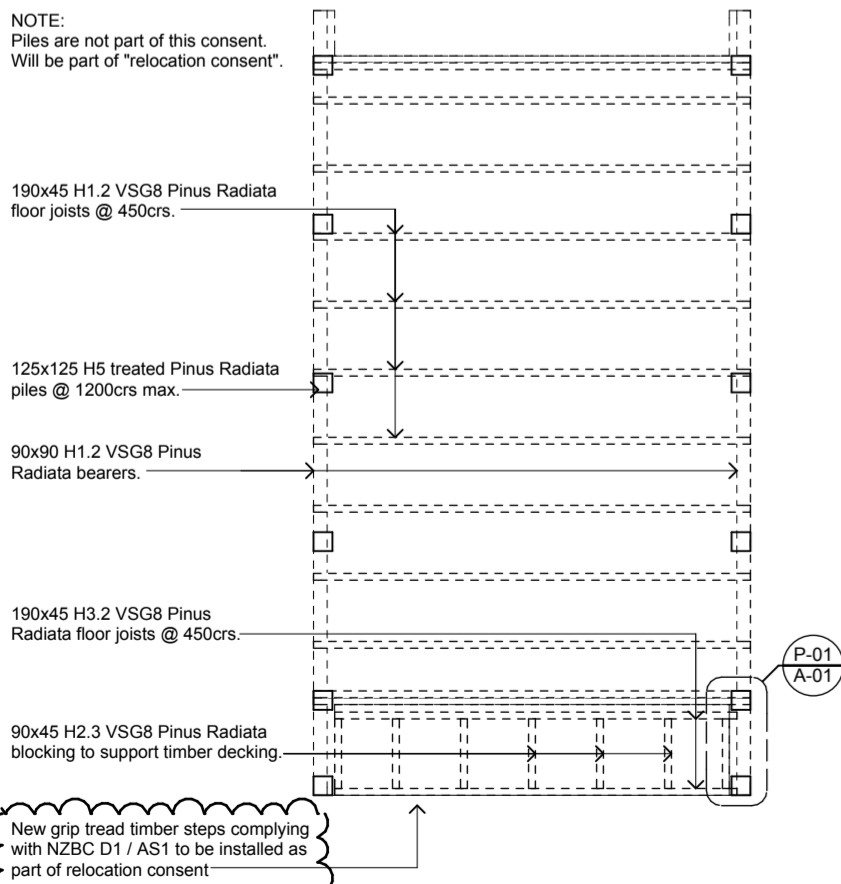
NOTE
Construction has been designed for
a "Very High" windzone & a 1kPa
snow loading.



Proposed Floor Plan

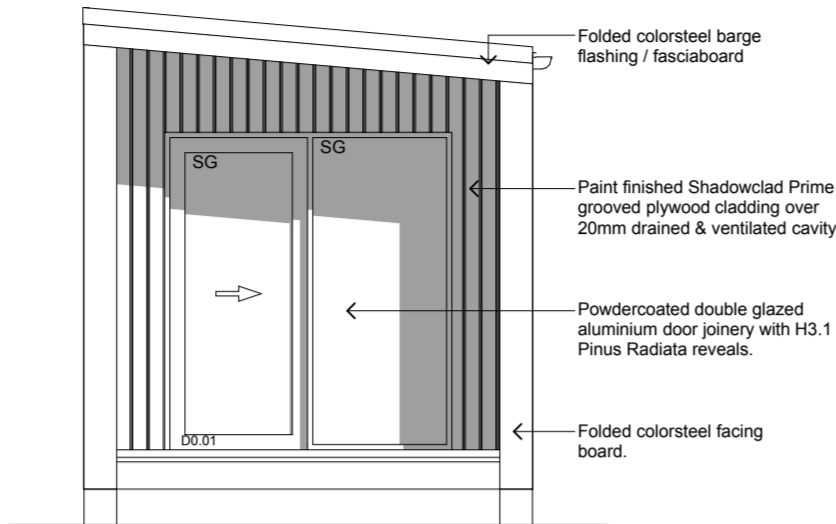
1:50

NOTE:
Piles are not part of this consent.
Will be part of "relocation consent".



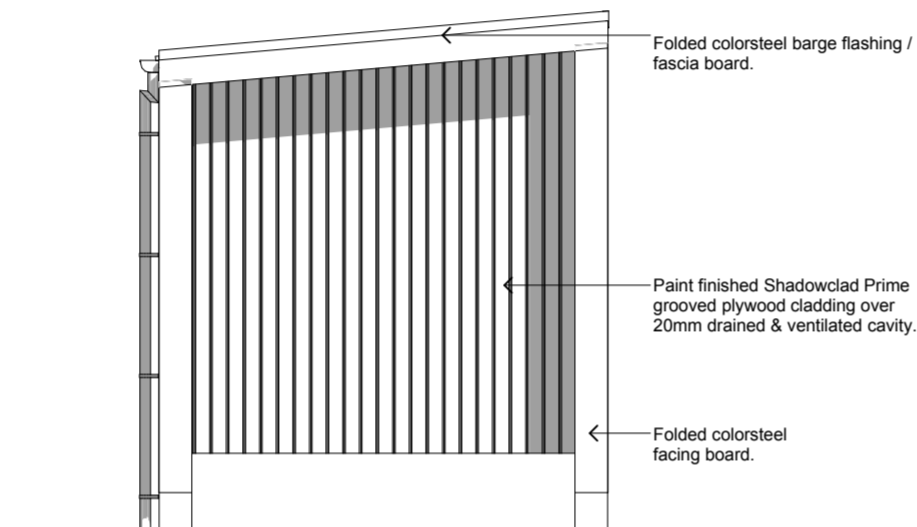
Floor Framing Layout

1:50



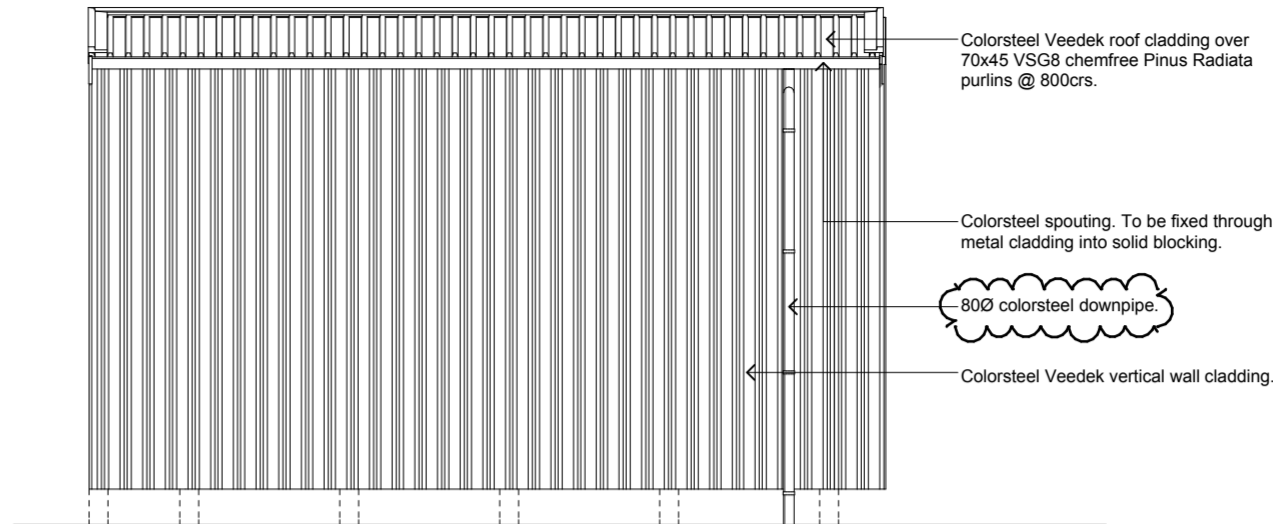
Elevation A

1:50



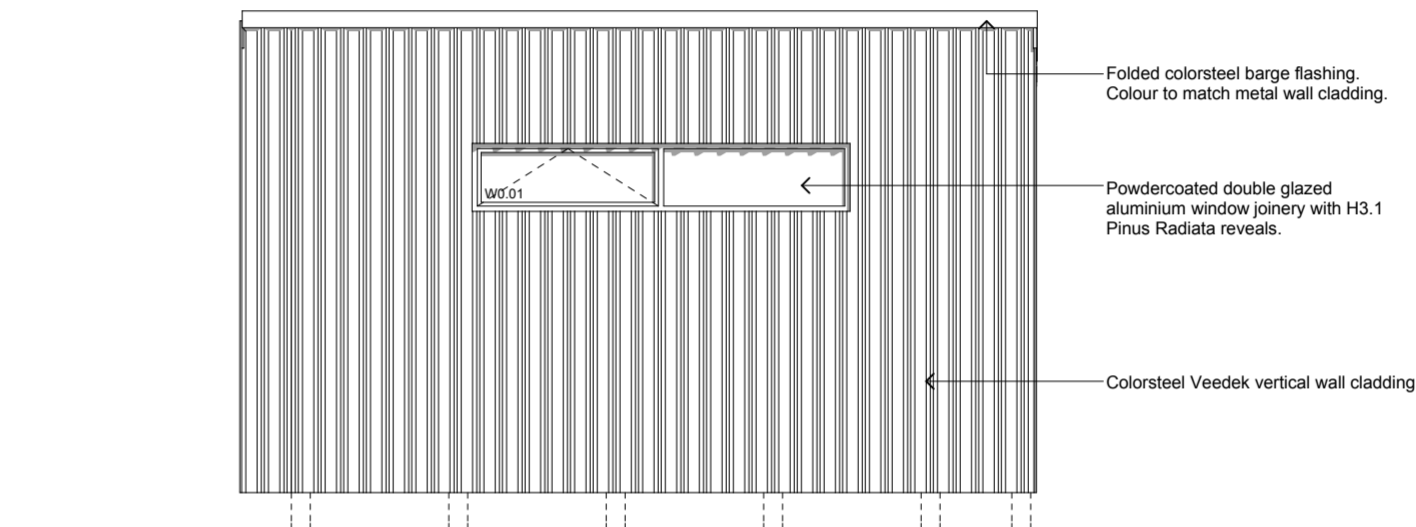
Elevation C

1:50



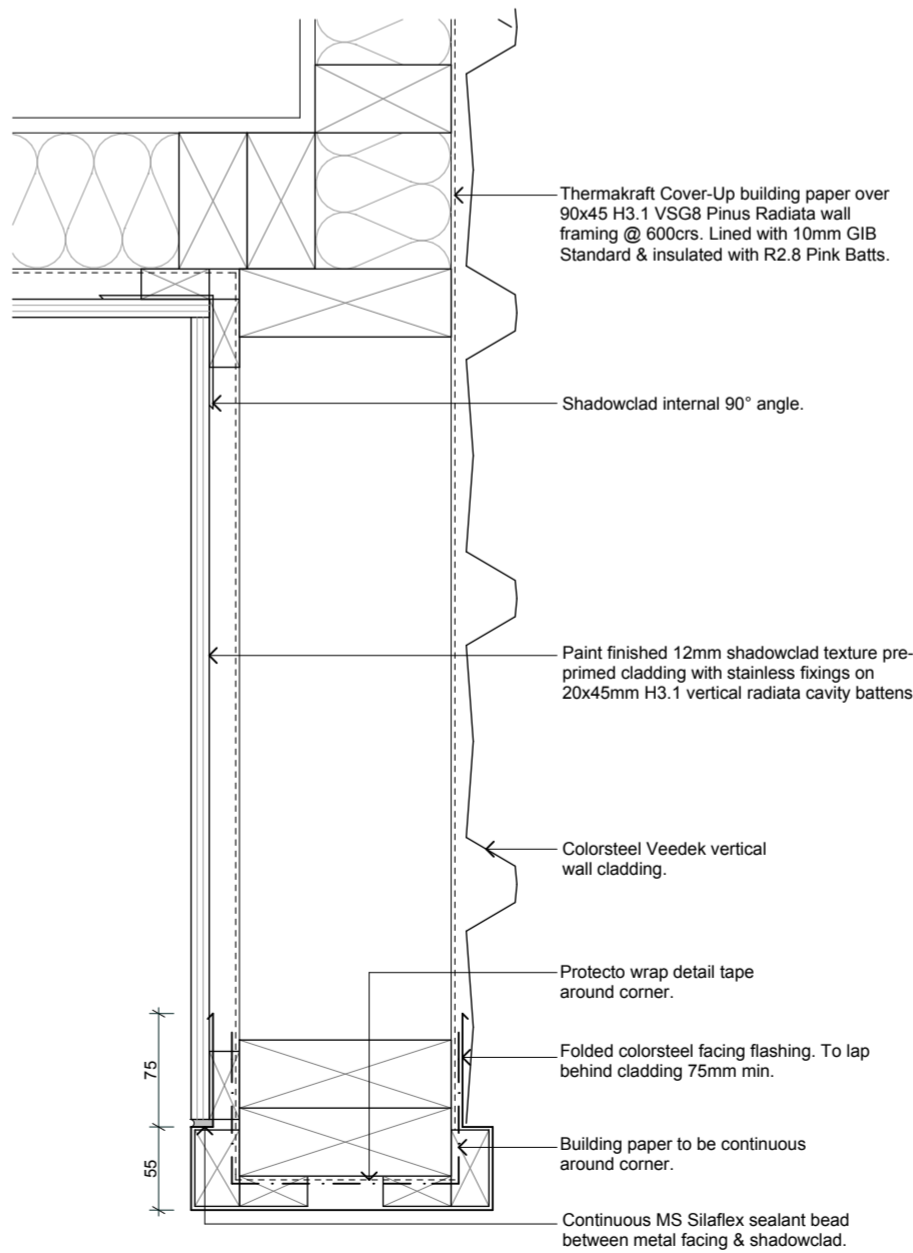
Elevation B

1:50



Elevation D

1:50



Detail - P-01

1:5

SECTIONS

SCALE : 1:25, 1:5 @ A2

DATE : 23/09/2010

PROJECT No: 1006

REVISION

A-02

Krush Architecture Ltd

7/41 Sir William Pickering Dr

PO Box 29558

Christchurch New Zealand

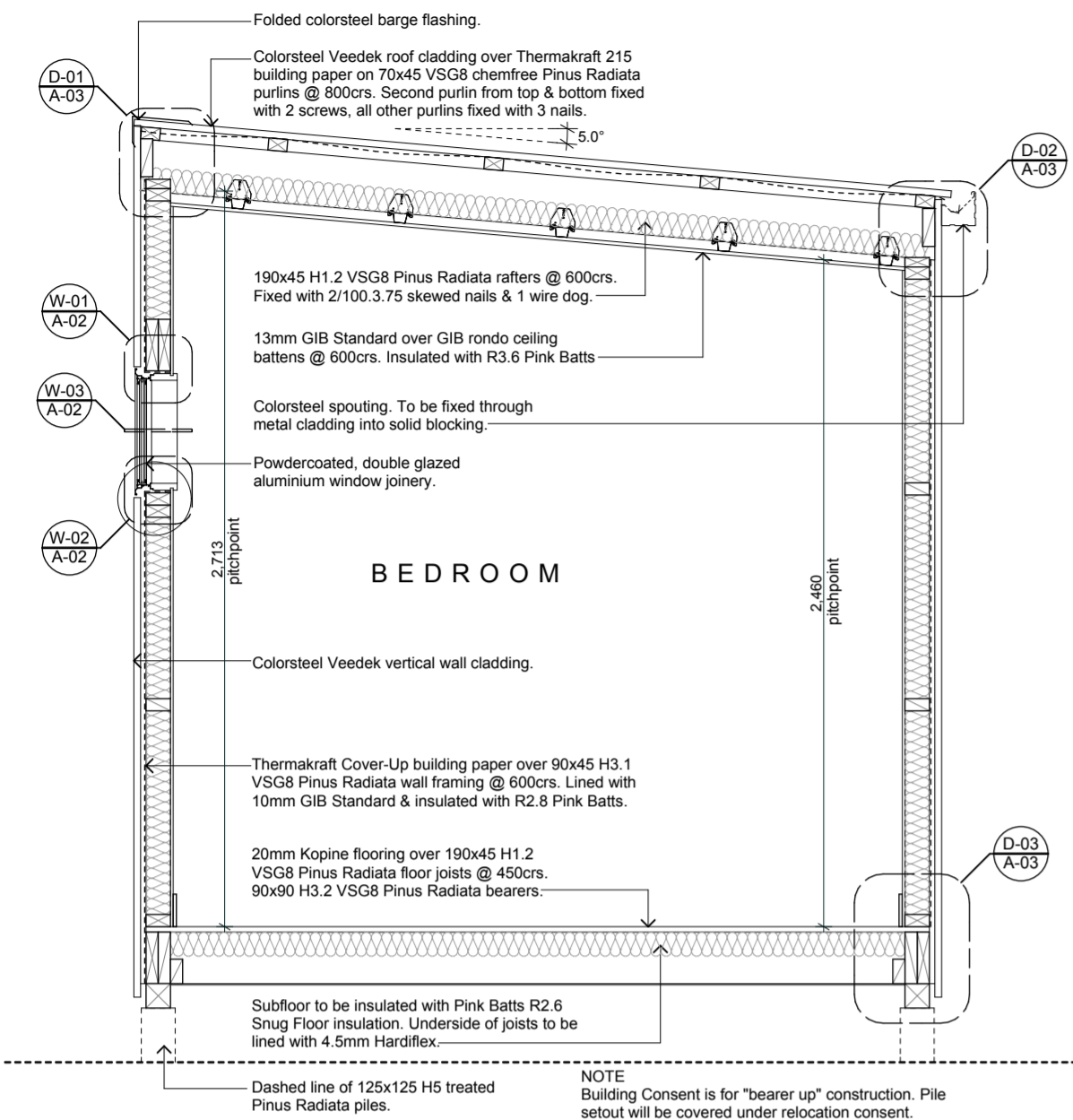
+64 03 357 9241 Office

+64 03 358 5196 Fax

krusharchitecture@clear.net.nz

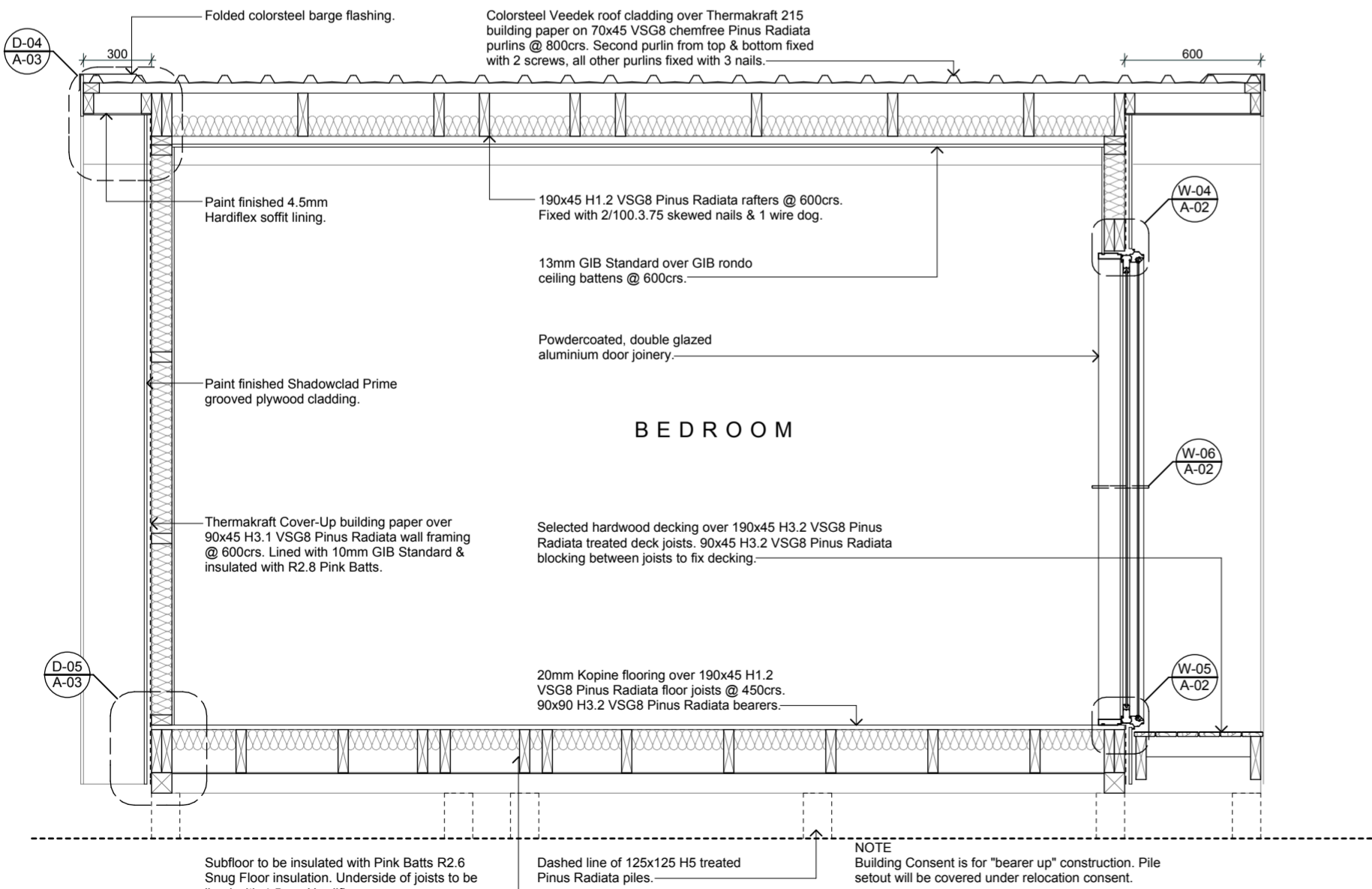
DO NOT SCALE DRAWING
CONTRACTOR TO VERIFY ALL DIMENSIONS
PRIOR TO COMMENCING WORK

© THE DESIGNS CONTAINED ON THIS SHEET OF DRAWINGS ARE COPYRIGHT



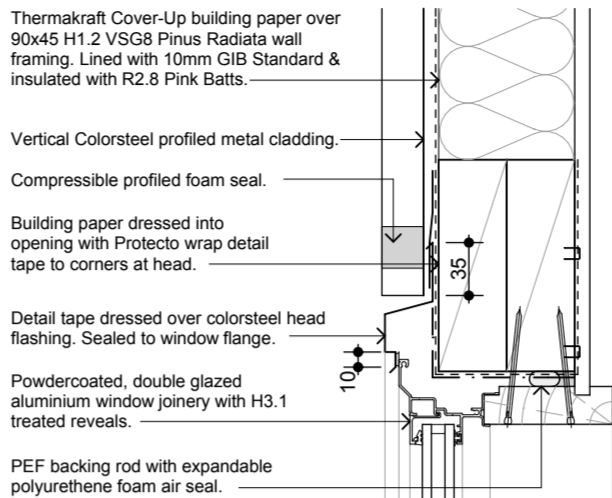
Section A

1:25



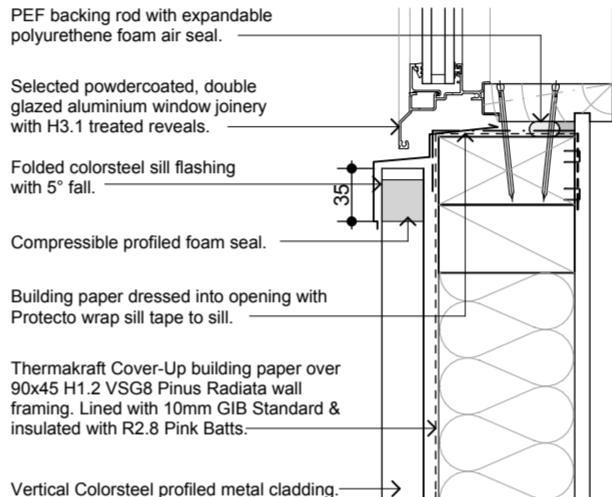
Section B

1:25



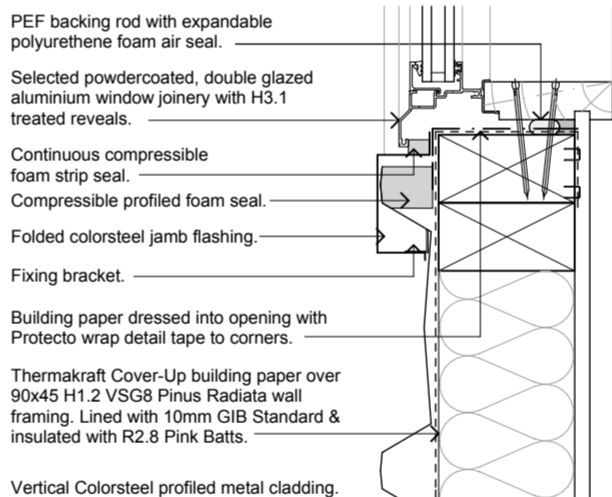
Detail - W-01

1:5



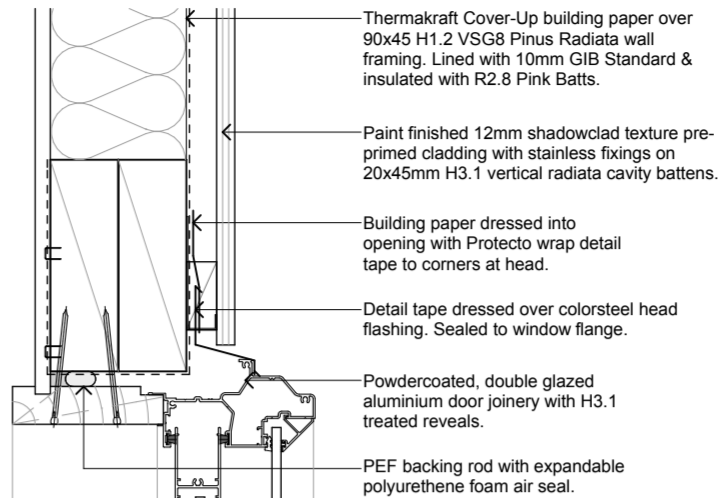
Detail - W-02

1:5



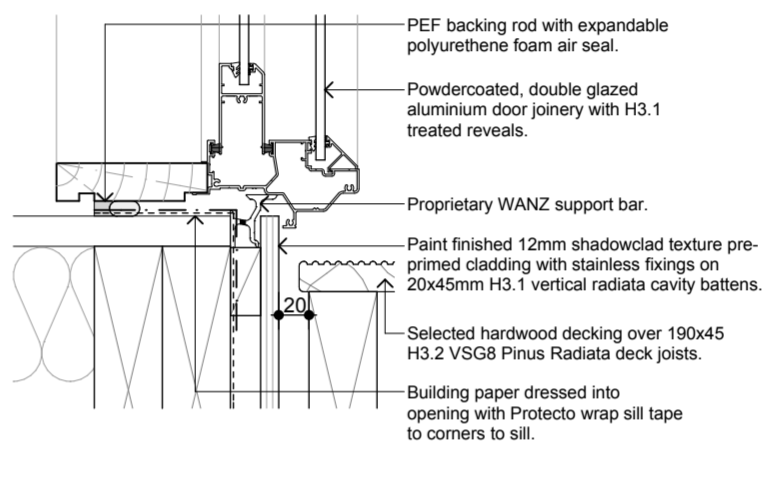
Detail - W-03

1:5



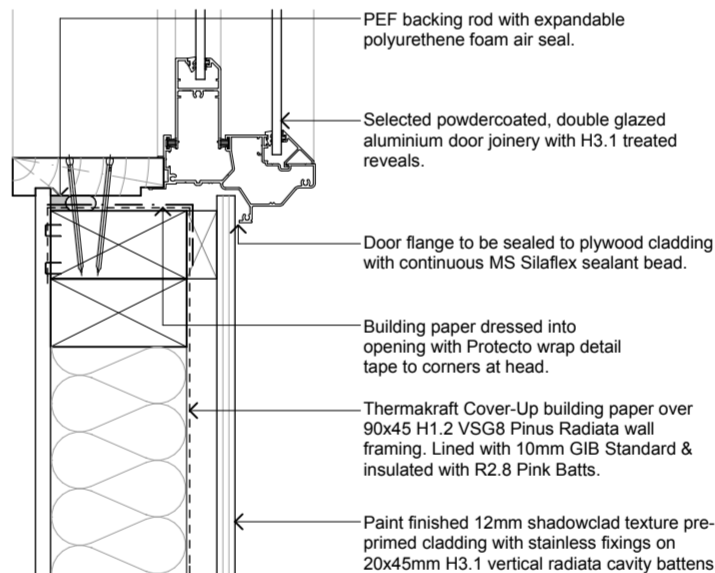
Detail - W-04

1:5



Detail - W-05

1:5



Detail - W-06

1:5

ISSUED FOR BUILDING CONSENT ONLY. NOT FOR CONSTRUCTION WITHOUT C.C.C. APPROVAL

CONSTRUCTION DETAILS

SCALE : 1:5 @ A2

DATE : 23/09/2010

PROJECT No: 1006

REVISION

A-03

Krush Architecture Ltd

7/41 Sir William Pickering Dr

PO Box 29558

Christchurch New Zealand

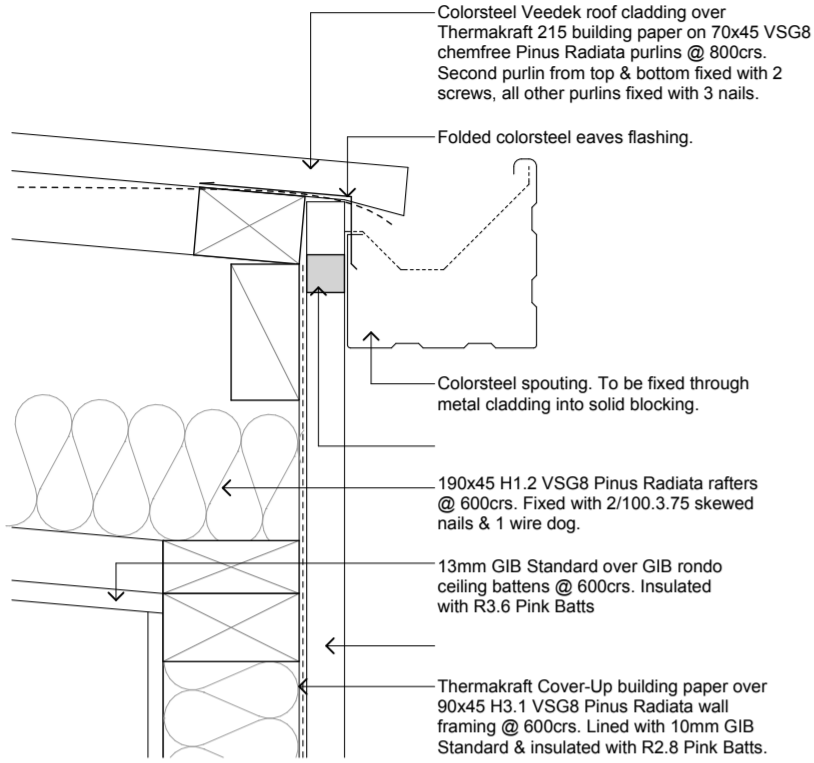
+64 03 357 9241 Office

+64 03 358 5196 Fax

krusharchitecture@clear.net.nz

DO NOT SCALE DRAWING
CONTRACTOR TO VERIFY ALL DIMENSIONS
PRIOR TO COMMENCING WORK

© THE DESIGNS CONTAINED ON THIS SHEET OF DRAWINGS ARE COPYRIGHT



Detail - D-02

1:5

Colorsteel Veedek roof cladding over Thermakraft 215 building paper on 70x45 VSG8 chemfree Pinus Radiata purlins @ 800crs. Second purlin from top & bottom fixed with 2 screws, all other purlins fixed with 3 nails.

Folded colorsteel barge flashing.

Compressible foam air seal.

190x45 H1.2 VSG8 Pinus Radiata rafters @ 600crs. Fixed with 2/100.3.75 skewed nails & 1 wire dog.

13mm GIB Standard over GIB rondo ceiling battens @ 600crs. Insulated with R3.6 Pink Batts

Colorsteel Veedek vertical wall cladding.

Thermakraft Cover-Up building paper over 90x45 H3.1 VSG8 Pinus Radiata wall framing @ 600crs. Lined with 10mm GIB Standard & insulated with R2.8 Pink Batts.

Detail - D-01

1:5

Colorsteel Veedek roof cladding over Thermakraft 215 building paper on 70x45 VSG8 chemfree Pinus Radiata purlins @ 800crs. Second purlin from top & bottom fixed with 2 screws, all other purlins fixed with 3 nails.

Folded colorsteel barge flashing fascia over H3.1 Pinus Radiata backing board.

4.5mm Hardiflex soffit lining.

Continuous MS Silaflex sealant bead between cladding & soffit lining.

190x45 H1.2 VSG8 Pinus Radiata rafters @ 600crs. Fixed with 2/100.3.75 skewed nails & 1 wire dog.

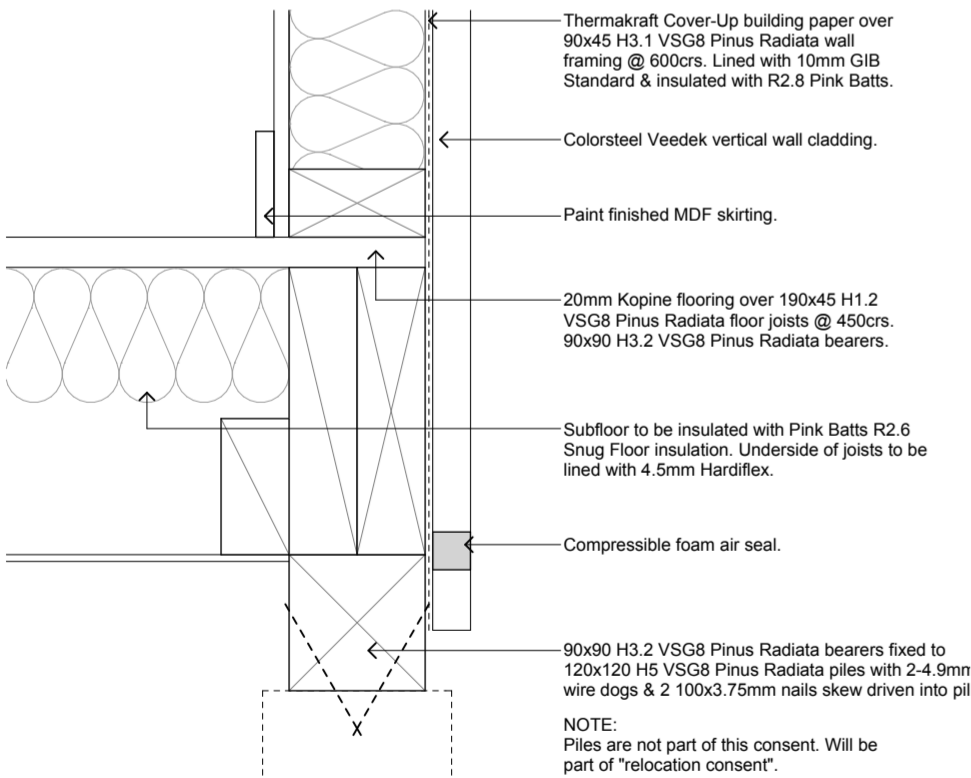
13mm GIB Standard over GIB rondo ceiling battens @ 600crs. Insulated with R3.6 Pink Batts

Paint finished 12mm shadowclad texture pre-primed cladding with stainless fixings on 20x45mm H3.1 vertical radiata cavity battens.

Thermakraft Cover-Up building paper over 90x45 H3.1 VSG8 Pinus Radiata wall framing @ 600crs. Lined with 10mm GIB Standard & insulated with R2.8 Pink Batts.

Detail - D-04

1:5



Detail - D-03

1:5

Thermakraft Cover-Up building paper over 90x45 H3.1 VSG8 Pinus Radiata wall framing @ 600crs. Lined with 10mm GIB Standard & insulated with R2.8 Pink Batts.

Paint finished 12mm shadowclad texture pre-primed cladding with stainless fixings on 20x45mm H3.1 vertical radiata cavity battens.

Paint finished MDF skirting.

20mm Kopine flooring over 190x45 H1.2 VSG8 Pinus Radiata floor joists @ 450crs. 90x90 H3.2 VSG8 Pinus Radiata bearers.

Subfloor to be insulated with Pink Batts R2.6 Snug Floor insulation. Underside of joists to be lined with 4.5mm Hardiflex.

Proprietary uPVC cavity closer.

90x90 H3.2 VSG8 Pinus Radiata bearers fixed to 120x120 H5 VSG8 Pinus Radiata piles with 2-4.9mm wire dogs & 2 100x3.75mm nails skew driven into pile.

NOTE:
Piles are not part of this consent. Will be part of "relocation consent".

Detail - D-05

1:5